



MBR/MBF49-S



C-UL listing applies to one-door and two-door models only.

MBR/MBF SERIES Bottom Mounted Solid Door Reach-Ins

REFRIGERATORS

- ☐ MBR23-S
- ☐ MBR49-S
- ☐ MBR72-S

FREEZERS

- ☐ MBF23-S
- ☐ MBF49-S
- ☐ MBF72-S

FEATURES

STANDARD ELECTRONIC CONTROL

- Digitally displays inside temperature
- Allows user to monitor and adjust temperature set point within normal temperature range
- Visual and audible door open alarm
- Clean condenser alarm (displays "CL" every 6 months)
- Decreases service time and calls

CONSTRUCTION

- Curved corner design creates a stylish appearance and reduces chances of injury in slip-and-fall accidents
- Stainless steel exterior on front, sides and doors
- Exterior top, bottom and back are galvanized steel
- Interior liner and door panel are stainless steel
- Foamed-in-place with low ODP polyurethane insulation
- Wall thickness:
 - Sides 1⁷/₈"
 - Top and back.....2"
 - Bottom2³/₈"

- 4" diameter casters
- Four casters on one- and two-door models and six on three-door models (two casters on each model are locking type)
- Four adjustable heavy-duty vinyl-coated shelves per door

DOORS

- Heavy-duty pull handles
- Self-closing at 96°
- Hold open feature at 110°
- Individual door locks
- Self-adjusting magnetic gaskets
- Interior incandescent light activated by switch for each door
- Anti-condensate heater wires on door openings
- Standard door swing configuration:
 - MBR/MBF23-S hinged right
 - MBR/MBF49-Sleft door hinged left, right door hinged right
 - MBR/MBF72-Sleft door hinged left, middle door hinged right, right door hinged right
- Field reversible doors on single door models (requires left hand hinging kit)
- Door width:
 - MBR/MBF23-S 27¹/₄"
 - MBR/MBF49-S 25¹/₂"
 - MBR/MBF72-S 25¹/₂"

REFRIGERATION

- Self-contained bottom mount refrigeration system
- Capillary tube controls refrigerant flow
- Automatic defrost
- Fabric condensation kit uses wicks to draw condensate from the drain pan for faster removal
- Refrigerant:
 - Refrigerators..... R-134a
 - FreezersR-404A
- Temperature range:
 - Refrigerators.....32° to 40°F (0° to 4° C)
 - Freezers-22° to 8°F (-30° to 13°C)

WARRANTY

- Standard limited four year extended compressor and one year limited parts and labor

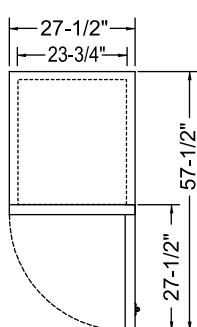
OPTIONS

- ☐ Extra vinyl-coated wire shelves
- ☐ 6" adjustable feet
- ☐ Left hand hinging kit
- ☐ Pan rack

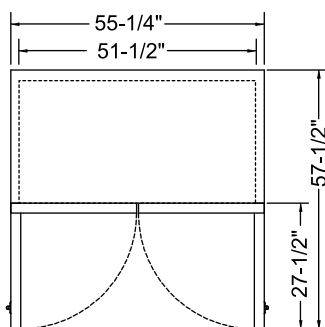
TECHNICAL SPECIFICATIONS

| MODEL | DIMENSIONS (in.) | | | DIMENSIONS (mm) | | | VOLTS | AMPS | UNIT H.P. | NO. OF DOORS | NO. OF SHELVES | STANDARD SHELF SIZE (in inches) | CAP. CU. FT. | SHIP CU. FT. | SHIP WT. (LB/KG) |
|---------------|--------------------------------|----|--------------------------------|--------------------|-----|------|---------------|------|--------------|-----------------|-------------------|---|--------------------|--------------------|------------------------|
| | L | D* | H* | L | D* | H* | | | | | | | | | |
| REFRIGERATORS | | | | | | | | | | | | | | | |
| MBR23-S | 27 ¹ / ₂ | 33 | 83 ³ / ₄ | 699 | 838 | 2127 | 115 | 7.5 | 3/8 | 1 | 4 | 22 ⁷ / ₁₆ X 22 ⁹ / ₁₆ | 23.0 | 46.1 | 290/132 |
| MBR49-S | 55 ¹ / ₄ | 33 | 83 ³ / ₄ | 1403 | 838 | 2127 | 115 | 7.5 | 3/8 | 2 | 8 | 22 ⁷ / ₁₆ X 22 ⁵ / ₈ | 49.0 | 88.5 | 482/219 |
| MBR72-S | 78 | 33 | 83 ³ / ₄ | 1981 | 838 | 2127 | 115 | 10.0 | 1/2 | 3 | 12 | *** | 70.0 | 124.1 | 632/287 |
| FREEZERS | | | | | | | | | | | | | | | |
| MBF23-S | 27 ¹ / ₂ | 33 | 83 ³ / ₄ | 699 | 838 | 2127 | 115 | 8.5 | 1/2 | 1 | 4 | 22 ⁷ / ₁₆ X 22 ⁹ / ₁₆ | 23.0 | 46.1 | 309/140 |
| MBF49-S | 55 ¹ / ₄ | 33 | 83 ³ / ₄ | 1403 | 838 | 2127 | 115 | 9.5 | 3/4 | 2 | 8 | 22 ⁷ / ₁₆ X 22 ⁵ / ₈ | 49.0 | 88.5 | 504/229 |
| MBF72-S | 78 | 33 | 83 ³ / ₄ | 1981 | 838 | 2127 | 115/208-230** | 9.0 | 1.1 | 3 | 12 | *** | 70.0 | 124.1 | 636/289 |

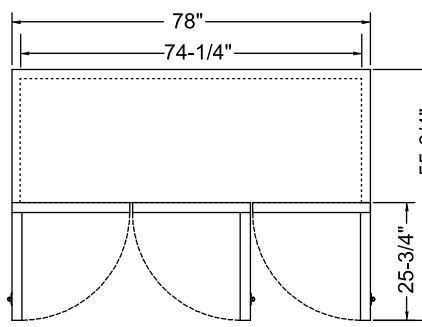
*Depth includes door handle, height includes casters. **208-230/60/1 also requires neutral and safety ground wire. ***LH & RH shelf for 3 door models is 22⁷/₁₆" x 22⁹/₁₆", center shelf is 22⁷/₁₆" x 25¹/₄".



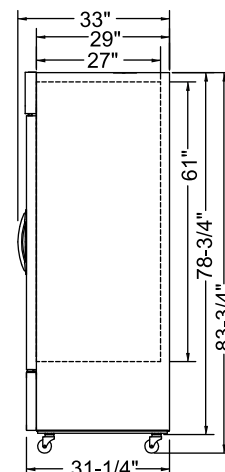
MBR/MBF23-S
PLAN VIEW



MBR/MBF49-S
PLAN VIEW



MBR/MBF72-S
PLAN VIEW



SIDE VIEW

LISTINGS

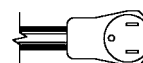


C-UL listing applies to one-door and two-door models only.

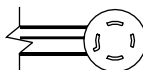
HOOKUP

All models except MBF72-S: Via plug in, 9.8 foot long flexible three wire 14/3 cord with molded plug.

MBF72-S: 9.8 foot long flexible four wire 208-230v 14/4 cord with neutral and ground wires and molded plug.



NEMA 5-15P (all models except MBF72-S)



NEMA L14-20P (MBF72-S)

BID SPECIFICATIONS

Item no. MBR/MBF____-S. Provide _____ Bottom Mounted Solid Door Reach-in(s), Master-Bilt model no. MBR/MBF____-S.

Reach-in will feature rounded corner construction with stainless steel interior and exterior. Top, bottom and back will be galvanized steel. Reach-in will also be

equipped with an electronically controlled monitoring system with door alarm function.

The refrigeration system will be bottom mounted and self-contained. Freezers will use R-404A refrigerant, refrigerators will use R-134a. The temperature range will be 32° to 40°F (0° to 4° C) for refrigerators and -22° to

8°F (-30° to 13°C) for freezers.

Reach-in to have standard limited four year extended compressor warranty and one year limited parts and labor warranty.

Reach-in to be ENERGY STAR[®] qualified and UL and ETL listed. One-door and two-door models will also be C-UL listed.

NOTE: Cabinet designed for optimum performance in air-conditioned area at 75°F ambient and 55% relative humidity. All specifications subject to change without notice.