



MBUF/MBUR48



ENERGY STAR® qualification applies to undercounter refrigerator models only.

MBU SERIES

Undercounter/Worktable Refrigerators & Freezers

REFRIGERATORS

- MBUR27
- MBUR36
- MBUR48
- MBUR60
- MBUR72

FREEZERS

- MBUF27
- MBUF48
- MBUF60

FEATURES

CONSTRUCTION

- Curved corner design creates a stylish appearance and reduces chances of injury in slip-and-fall accidents
- Stainless steel interior and exterior
- Foamed-in-place with low ODP polyurethane insulation
- Wall thickness: 2"
- 6" diameter casters
- Adjustable heavy-duty vinyl-coated shelves

DOORS

- Self-closing
- Standard door swing configuration:
 - 1-door models hinged right
 - 2-door models.....left hinged left, right hinged right

- 3-door model.....left hinged left, middle door hinged left, right door hinged right
- Door width:
 - MBUR/MBUF27 27¹/₄"
 - MBUR36..... 18"
 - MBUR/MBUF48..... 23⁷/₈"
 - MBUR/MBUF60..... 30"
 - MBUR72..... 23⁷/₈"

REFRIGERATION

- Self-contained forced air refrigeration system
- Refrigerant:
 - MBUR models & MBUF27 ... R-134a
 - All other MBUF models.....R-404A
- Temperature range:
 - MBUR..... 32° to 40°F (0° to 4°C)
 - MBUF-1° to -11°F (-18° to -24°C)

WARRANTY

- Standard limited four year extended compressor and one year limited parts and labor

OPTIONS

- Low profile casters for ADA compliance
- Single or double overshef
- Refrigerated drawers (excluding MBUR36)

BID SPECIFICATIONS

Item no. MBU_____. Provide _____ Undercounter/worktable refrigerator/freezer(s), Master-Bilt model no. MBU_____. Undercounter will feature rounded corner construction with stainless steel interior and exterior. The refrigeration system will be bottom

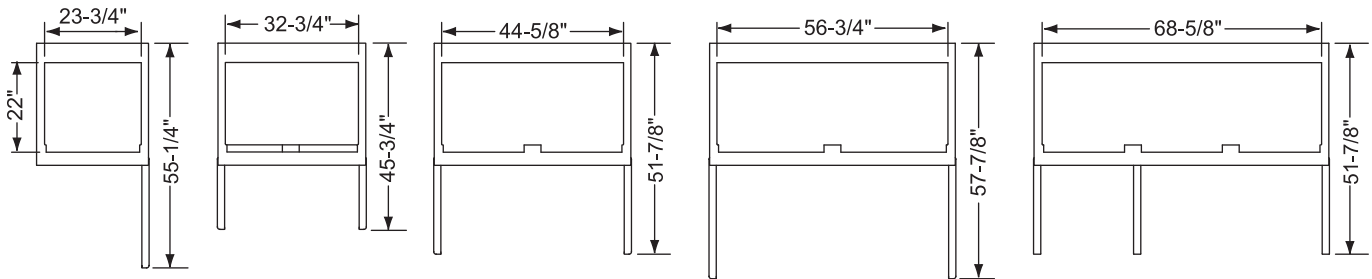
mounted and self-contained. Freezers will use R-404A refrigerant, except for MBUF27 which will use R-134a. Refrigerators will use R-134a. The temperature range will be 32° to 40°F (0° to 4° C) for refrigerators and -1° to -11°F (-18° to -24°C) for freezers. Undercounter to have standard limited 4

year extended compressor warranty and one year limited parts and labor warranty. Undercounter to be UL, C-UL and ETL Sanitation listed with ENERGY STAR qualification on undercounter refrigerator models.

TECHNICAL SPECIFICATIONS

MODEL	DIMENSIONS (in.)			DIMENSIONS (mm)			VOLTS	AMPS	UNIT H.P.	NO. OF DOORS	NO. OF SHELVES	CAP. CU. FT.	SHIP CU. FT.	SHIP WT. (LB/KG)
	L	D	H*	L	D	H*								
REFRIGERATORS														
MBUR27	27 ¹ / ₂	30	35 ⁷ / ₈	699	762	911	115	3.2	1/5	1	1	7.0	21.1	199/90
MBUR36	36 ³ / ₈	30	35 ⁷ / ₈	924	762	911	115	3.6	1/5	2	2	9.4	26.6	242/110
MBUR48	48 ¹ / ₄	30	35 ⁷ / ₈	1226	762	911	115	7.9	3/8	2	2	13.0	35.9	280/127
MBUR60	60 ³ / ₈	30	35 ⁷ / ₈	1534	762	911	115	7.9	3/8	2	2	16.5	44.2	333/151
MBUR72	72 ³ / ₈	30	35 ⁷ / ₈	1838	762	911	115	8.1	3/8	3	3	20.0	52.2	384/175
FREEZERS														
MBUF27	27 ¹ / ₂	30	35 ⁷ / ₈	699	762	911	115	8.3	3/8	1	1	7.0	21.1	207/94
MBUF48	48 ¹ / ₄	30	35 ⁷ / ₈	1226	762	911	115	8.9	1/2	2	2	13.0	35.9	298/135
MBUF60	60 ³ / ₈	30	35 ⁷ / ₈	1534	762	911	115	8.9	1/2	2	2	16.5	44.2	350/159

*Height includes casters.



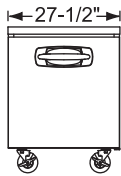
MBUR/MBUF27
PLAN VIEW

MBUR36
PLAN VIEW

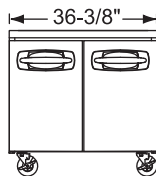
MBUR/MBUF48
PLAN VIEW

MBUR/MBUF60
PLAN VIEW

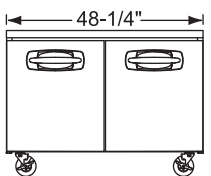
MBUR72
PLAN VIEW



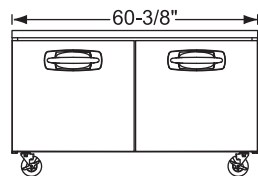
MBUR/MBUF27
ELEVATION VIEW



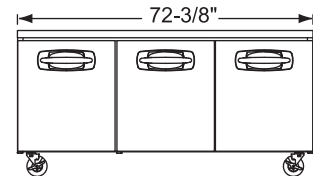
MBUR36
ELEVATION VIEW



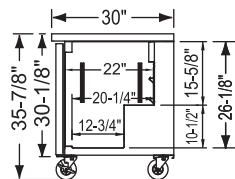
MBUR/MBUF48
ELEVATION VIEW



MBUR/MBUF60
ELEVATION VIEW



MBUR72
ELEVATION VIEW



ALL MODELS
SIDE VIEW

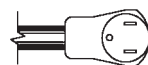
LISTINGS



ENERGY STAR[®] qualification applies only to undercounter refrigerator models.

HOOKUP

All models via plug in, 9 foot long flexible three wire 14/3 cord with molded plug.



NEMA 5-15P

NOTE: Cabinet designed for optimum performance in air-conditioned area at 75°F ambient and 55% relative humidity. All specifications subject to change without notice.